



BHS HQ Information and Accessibility Guide

The British Horse Society

Abbey Park

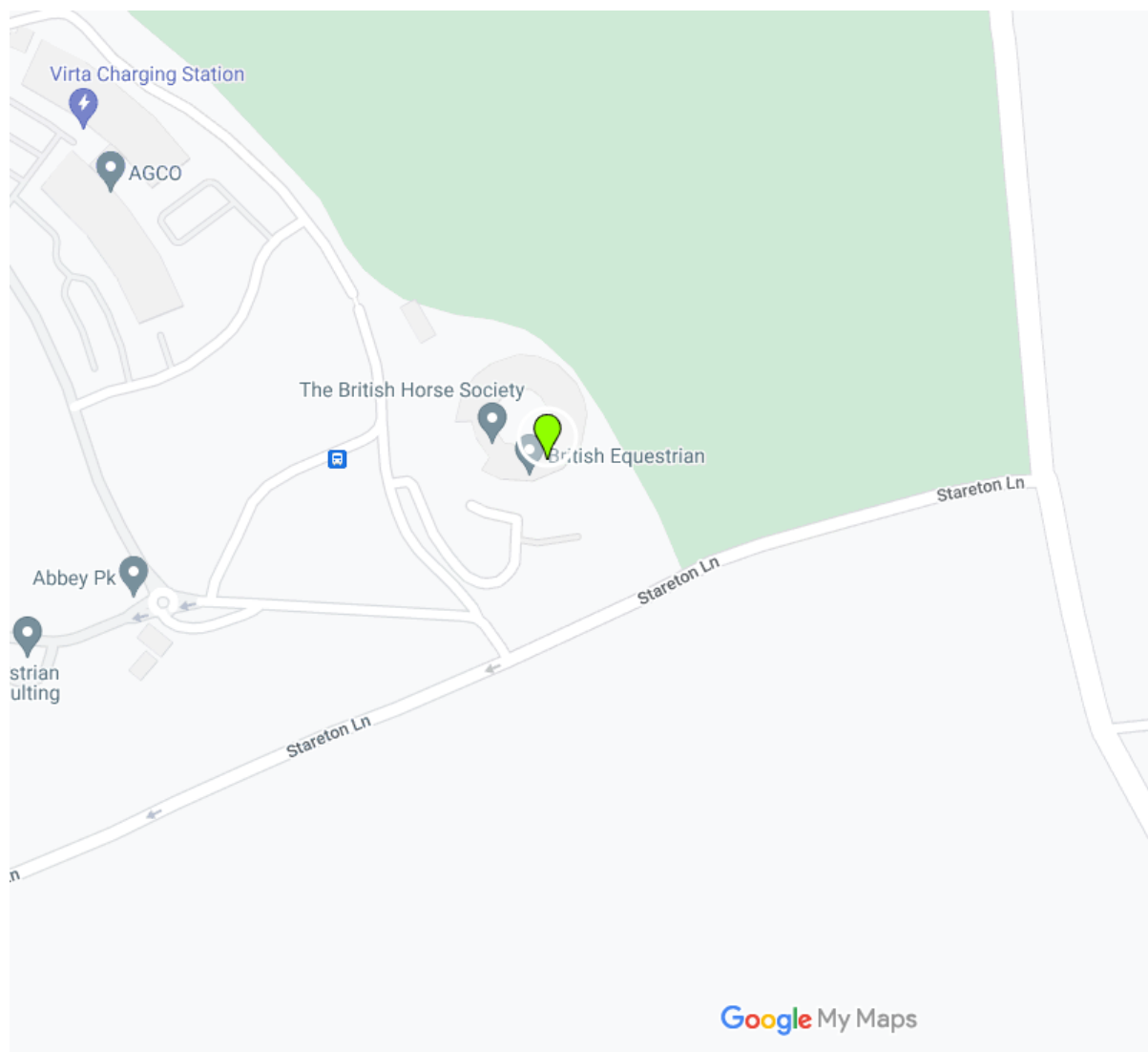
Stareton

Kenilworth

Warwickshire

CV8 2XZ Reproduced with kind permission of the Riding For Disabled Association

Travel Information



Travelling by Public Transport

What three words; ///pills.atoms.librarian **The closest train station is**

Coventry Train Station – 5.8 miles to BHS HQ – Mainline Station

Leamington Spa – 6.1 miles to BHS HQ – Mainline station

Warwick Parkway – 9.3 miles to BHS HQ – Mainline Station

Please visit <https://www.nationalrail.co.uk/stations/> for full details on accessibility of the stations, lift access and how to book assistance.

Taxi services

Call Line Taxis: 01926 512102

Uber's can be booked from their website.

Warwickshire also have a **mobility advice service** if you require more information - www.hubsmobilityadvice.com/area/warwickshire/taxi

Bus travel

There are buses from Abbey park that travel to Coventry, Kenilworth and Rugby

Please use the links below for two different bus routes and information.

<https://bustimes.org/services/24-coventry-baginton-bubbenhall-stoneleigh-kenilwo>

<https://bustimes.org/services/25-coventry-baginton-ryton-bourton-rugby#>

Walking/pushing to BHS HQ

We would **not advise** this due to the nature of the roads from the station to the venue.

There are limited pathways along this route and it's a fast country lane.

Venue Information



1 - View of the outside of the BHS HQ. There is brick paving up to the circular automatic doors. The outside is clad in wood and there are multiple glazed windows which are floor to ceiling.

Physical access, outside

BHS has its own carpark with 66 spaces including an overflow car park. There are 12 spaces in our accessible car park 2 are marked up for blue badge holders. If you require a space for an event we can book these but at a first come first served basis.

Please be aware some of the overflow car park is made of loose aggregate, but the accessible car park is paved with a dropped curb to the office.

Access from the visitor carpark where the accessible parking bay is located to the front entrance is all on one level. The main car park has steps up to the building.

Physical access, inside



2 - BHS Reception, Tiled floor with black carpet runner, glazed windows looking through to the area inside the building. Several plants can be seen

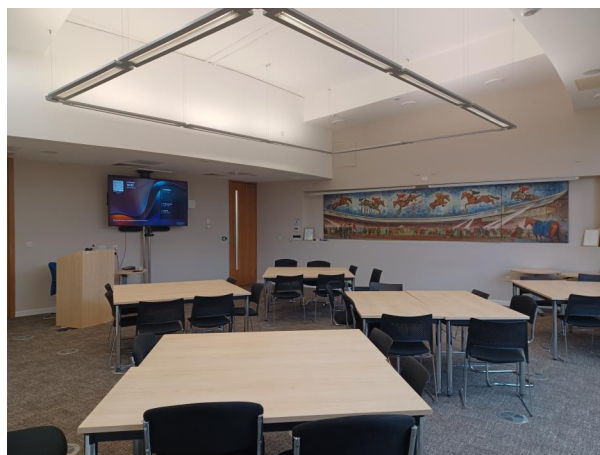
The building has three main areas, the BHS Space, the Tenants Space and the public areas which include the lecture theatre, board room, quiet space, kitchen and one set of toilets.

NB: all areas past the reception area need to be accessed with an access card or by the reception team releasing the door remotely.

The doors in the building are large and there are three power assisted doors into the main areas.

There is a hearing loop in the reception area. BHS HQ is all on one level with either tiles or carpet tiles. There are several meeting rooms, details below. There is plenty of natural light throughout the building. The lights are not dimmable but there are meeting rooms which have lower light including the quiet room.

Lecture Theatre



3 - Large room with grey carpet. Three tables are set out with 8 chairs around each. There is a large screen at the front of the room.

Seating for 70 people with large screen to the front and fire door to the back.

Board room



4 - Room with a rectangle desk with office style chairs around. Large TV screen at the front of the room

Seating for 16 people around a large rectangle desk. Limited space behind the chairs and access for a wheelchair. Large screen and windows at the rear.

Meeting Room 2



5 - Room with grey carpet, large desk with 10 chairs around the outside. Book cases on the back wall with glass doors and large TV screen at the front.

Seating for 10 people with space for wheelchair access and large screen at the front.

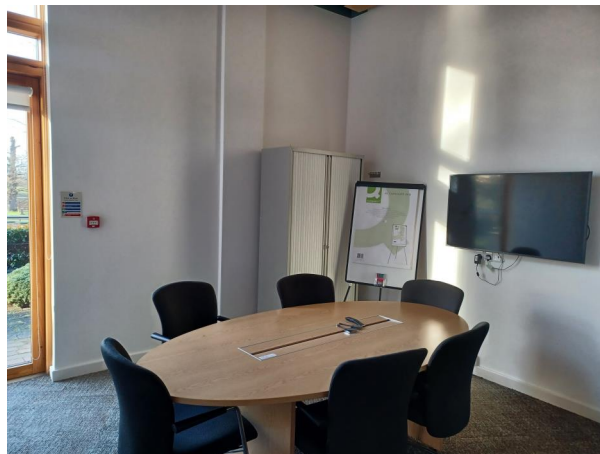
Meeting Room 4



6 - Small meeting room with a desk with 6 chairs around the outside. A large TV screen is on the wall.

Seating for 6 people with space for wheelchair access and large screen at the front

Meeting Room 5



7 - Small meeting room with a desk with 6 chairs. Large TV screen and a glass door to the outside

Seating for 6 people with space for wheelchair access and large screen at the front

Toilets



8 - Large accessible bathroom with toilet, sink and shower. The floor is vinyl and the walls are tiled.

There are gendered toilets and an accessible toilet in the public access part of the building. In the BHS Space part of the building, there are unisex toilets and an accessible toilet.

The non-accessible toilets have large, inward opening doors and are individual rooms.

NB: It may be worth noting that the bins in the toilets have a foot-push and lift top opening mechanism.

Coffee Bar



9 - Large room with grey carpet, white tables and chairs. There are pink comfortable seating near the entry door and glass partition.



This large room has armchair seating, tables and chairs and a kitchen area with kettle, microwaves and fridges. It is also home to the BHS Library.

Kitchen



10 - Small kitchen located in the BHS part of the building, A kitchen worktop with a sink, cupboards, drawers and a fridge and various waste disposal bins.

There is catering kitchen in the public area of the building and coffee lounge in the BHS part of the building. If you are attending an event, please let a member of staff know if this is required. We also have fridges available for storing medication.

Quiet Room



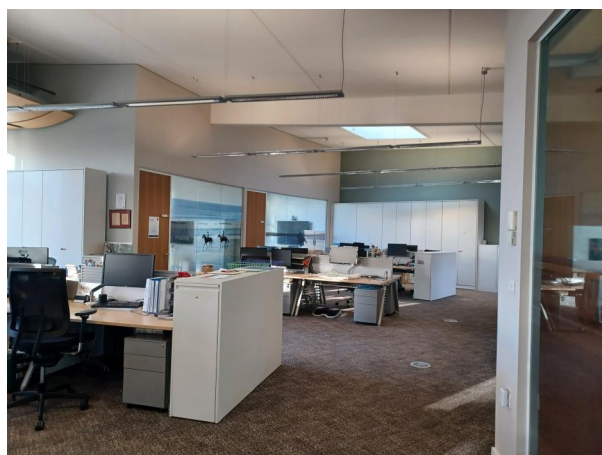
11 - Sofa with table and a screen behind



12 - Armchair with cupboard and small fridge

We have a quiet room equipped with a sofa, soft lighting, privacy screen, fridge (for medication and milk), religious items for prayer.

Cognitive Accessibility



13 - Our open plan office with glass walled private offices around the outside. Grey carpet with beech coloured desks and grey cupboards and drawers.

Quiet Spaces:

We have a designated quiet room, see above. We also have various meeting rooms that you can book, speak to our Facilities Team who will be happy to support.

Sound and light Sensitivity:

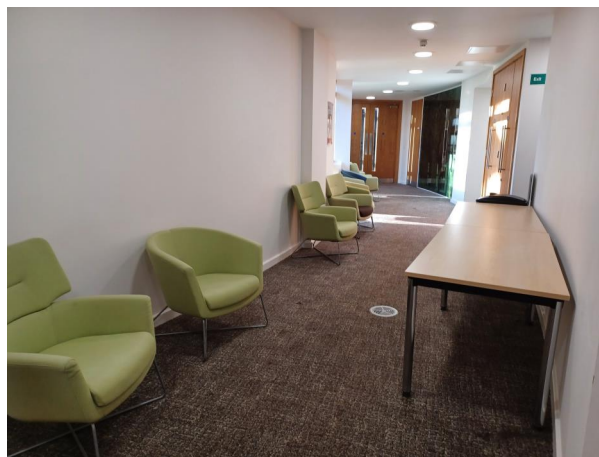
If you are light or sound sensitive in any way, please feel free to bring and use sunglasses or earplugs/ decibel droppers. Let us know so we can support your comfortable access.

If you are using sound reducing equipment, please let a member of our Home Team know in case of an emergency

Breaks:

You are welcome to take breaks throughout the day with refreshments available in the coffee bar, speak to your line manager about your team's process for this. If you feel the need to step away there is bench seating outside; by the front steps and in the inner circle of the building, comfy chairs in reception and in the coffee bar. The Quiet Room can also be used too.

Language, communication and visual access



14 - Corridor in the public area of the building with grey carpet and green comfortable seating to the outside.

British Sign Language (BSL)

We do not have a BSL Interpreters as part of our facilities on offer but please speak to your Line Manager, the People Team or the event organiser if this is a requirement for you.

Hearing loop

Located in reception.

Language

Our normal business day is conducted in English, please speak to us if you require translation and we will do our best to accommodate your needs.

Visual Access

There is a full glass automatic door in reception, there are large windows floor to ceiling windows throughout the venue.

Each meeting room has good lighting throughout.

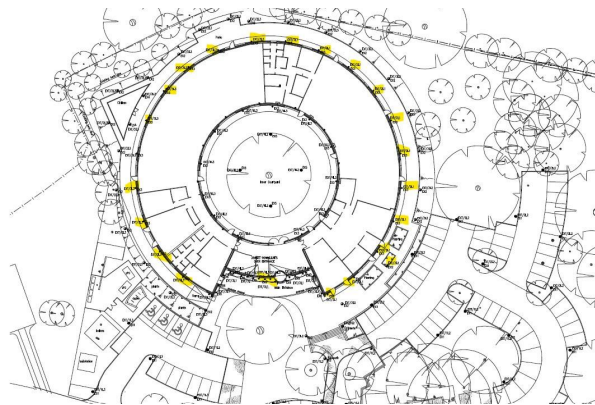
There are large screens in the majority of our meetings rooms ensure a clear view of videos/content.

There is no signage for toilets in the reception area but these are located to the left, please speak to our Reception Team who can allow access through the doors.

Assistance animals

Assistance or Support animals are welcome at the venue. If you plan on bringing a support animal, please let us know.

Emergency evacuation procedures



15 - Architectural drawings of the BHS HQ building. The building is round with a gap in the middle for a large Oak Tree. The emergency exits are marked, there are numerous around the outside of the building.

In the event of an emergency fire marshals will direct you to the nearest exit. There are various fire exit doors on the outside of the building. They have a push handle. The meeting point is at the top of the main car park. The accessible route will be via the top visitors car park.